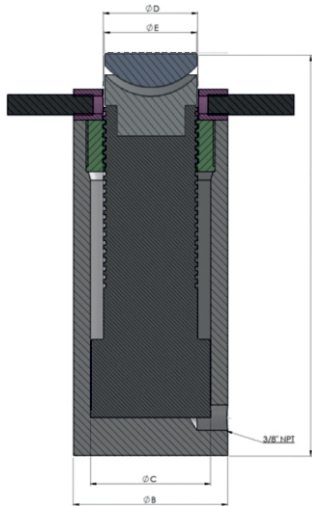


PTL-S

Planet Threaded Ram Load Return Along With Safety Lock Nut & Spherical Saddle



FEATURES /ADVANTAGES

- Load return. Single acting, Threaded Ram, with safety Lock Nut.
- Cylinder is honed to a surface finish of 0.5 microns.
- Spherical saddle tilt angle max 5°
- At the bottom holes are provided to Bolting .
- Connection Port 3/8" NPT.
- Long lifting handles are provided for easy lifting at site.
- Cylinder Body Hard chrome plated to avoid Scoring and Corrosion. Ram Blackodised.
- Lock Nut for safety purpose to sustain load on lock nut for long time.
- High pressure Oil seals for better life. Ram wiper protects entering dirt and foreign material into the cylinder which extends cylinder life.
- Alloy steel heat treated body for better life.
- Spherical Saddle reduces damage to jack against off-centre load.



PTL Series - P: Planet, **T:** Threaded Rod, **L:** Load Return, **600:** Capacity - ton, **100:** Stroke - mm

Model	Cap in (ton)	Cap. in (kN)	Stroke in (mm)	"A" Close Height	Effective Area in (cm ²)	Oil Cap in (cc)	"B" Cyl. OD	"C" Cyl. Bore ID	"D" Rod dia.	"E" Saddle dia.	wt. App in (kg)
PTL 600 - 100	600	5987	100	445	855.3	8553	430	330	275	260	450
PTL 600 - 150	600	5987	150	495	855.3	12829	430	330	275	260	501
PTL 800 - 100	800	7939	100	485	1134.1	11341	505	380	310	290	650
PTL 800 - 150	800	7939	150	535	1134.1	17012	505	380	310	290	739
PTL 1000 -100	1000	9930	100	520	1418.6	11486	560	425	350	330	900
PTL 1000 - 150	1000	9930	150	570	1418.6	21279	560	425	350	330	990

- Capacity and Stroke specified are under safety factors.
- Customized Tonnage and Strokes are manufactured as per customer requirement.
- While using please read the instructions/manual .
- Use at 75% of rating as safe practice.

- Specifications are subject to change due to continual improvement.
- Higher capacity and customized solution on request.
- Capacity and Stroke specified are maximum safe limits. Use at 80% of rating as safe practice.



Select pumping unit

Ref. pg. no. 25-26